

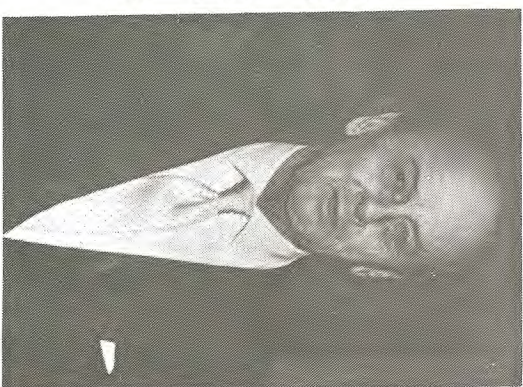
A message from His Grace, the Duke of Devonshire.

Dear Friends and Supporters,

I would like to take this opportunity to wish the Eastbourne Sinfonia, on the occasion of the 21st Gala Concert, every success both for today's performance and for your future plans.

I am aware of the high degree of organisation required to stage such a concert and I applaud those who have worked so hard to ensure that the afternoon is a success.

I very much regret that I will not be able to join you for what promises to be a most exciting and enjoyable gala concert.



The Eastbourne Sinfonia

**President
Patrons**

John Crawshaw
His Grace, the Duke of Devonshire

Jane Gow

John York

John Thornley

Myrtle Lines

Derek Coggan

John Davis

Liz Stone

Dennis Northey

John Bishop

Derek Ayers

Concert Manager

Secretary

Treasurer

Marketing Manager

Publicity Manager

Librarian

Federal Representative

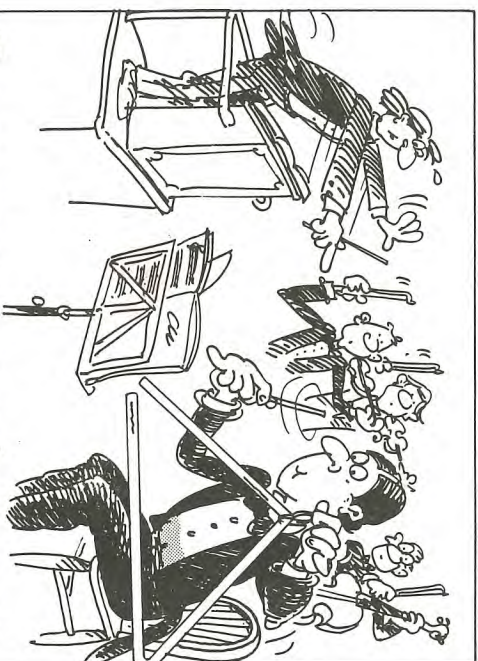
Friends' Co-ordinator

MUSICAL DIRECTOR – GRAHAM JONES LEADER – LISA WIGMORE

The Eastbourne Sinfonia was founded in 1979 by John Evans (its first President) to provide the town with a major orchestra of symphonic proportions, which would perform regularly on a seasonal basis. It consists of amateur and semi-professional players, including local music teachers, and also provides a platform for talented local students, as well as a forum for the training of young musicians in the locality. The average age is fairly low, one of the youngest players being 14 year old Nicholas Korth, who plays horn in the National Youth Orchestra; many previous players have gone on to music colleges or to study music at an advanced level elsewhere. A workshop for string players has been arranged for April 1986 to encourage young players to improve their playing with professionals.

The Orchestra has performed a wide variety of works, and concerts generally take the form of overture, symphony and concerto with a well-known soloist; we have been particularly fortunate in procuring the patronage of John York, who grew up and was educated in Eastbourne. There is also a choral concert every June, where the orchestra combines with the Eastbourne Tudor Singers and the Southbourne Choir. Programmes are chosen by a programme committee, with a view to being interesting and stimulating for the orchestra as well as acceptable and palatable to the audience. Memorable concerts include John York's performance of the Grieg Piano Concerto in 1981, "The Magic of Grieg on a night of pride" (Eastbourne Herald); the first Children's Concert in which Johnny Morris performed his own "Delilah the Sensitive Cow" and our first Christmas Concert in 1985.

The orchestra is governed by a Management Committee which formulates policy, and there are also various sub-committees including Finance and Publicity. Our President, John Crawshaw, provides invaluable business acumen. The orchestra is well supported by a Friends Organisation, numbering about 100 and also by its patrons – Jane Gow, John York and His Grace, the Duke of Devonshire. We are also very grateful for financial support from Eastbourne Borough Council and also for sponsorship and donations from various local businesses.



If you want to conduct your finances wisely, try Anglia.

ANGLIA
BUILDING SOCIETY

The building society that cares about what you want.

Branch Offices:

10 Cornfield Road, Eastbourne, East Sussex BN21 4QE.
1 George Street, Hailsham, East Sussex BN27 1AD.
14/16 Sutton Park Road, Seaford, East Sussex BN25 1QU.

Tel. 37341
Tel. 841805
Tel. 894121